

Backyard beekeeping

Ge Zhang

NMSU Agricultural Science Research Center at Los Lunas



Why to keep honey bees?



Investment of beekeeping supplies, \$ 500-600



Langstroth \$ 160-200



Top bar \$ 300-500



Flow hive \$ 300-800

Package bee
\$ 200



Beverly
Bees



Nucleus bees
\$ 200

Take care of safety of your family and neighbors

- Normal reaction to bee sting
 - Pain, Swelling, itching, hot to touch
- Allergic reaction
 - Swelling, itching in parts of body you did not get stung
 - Trouble breathing
 - Other symptoms



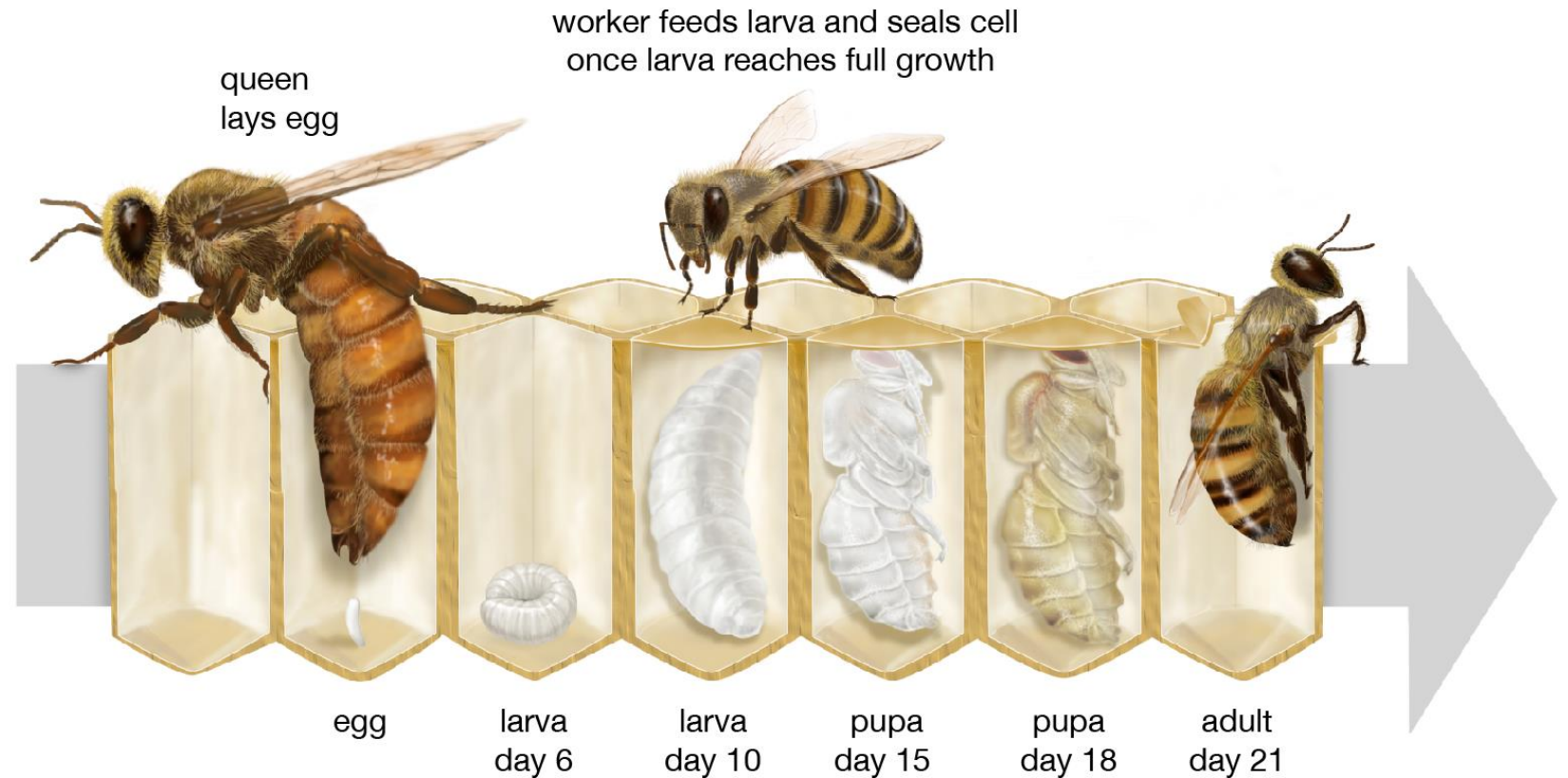
Know about the basic beekeeping knowledge

Three type of bees in colony

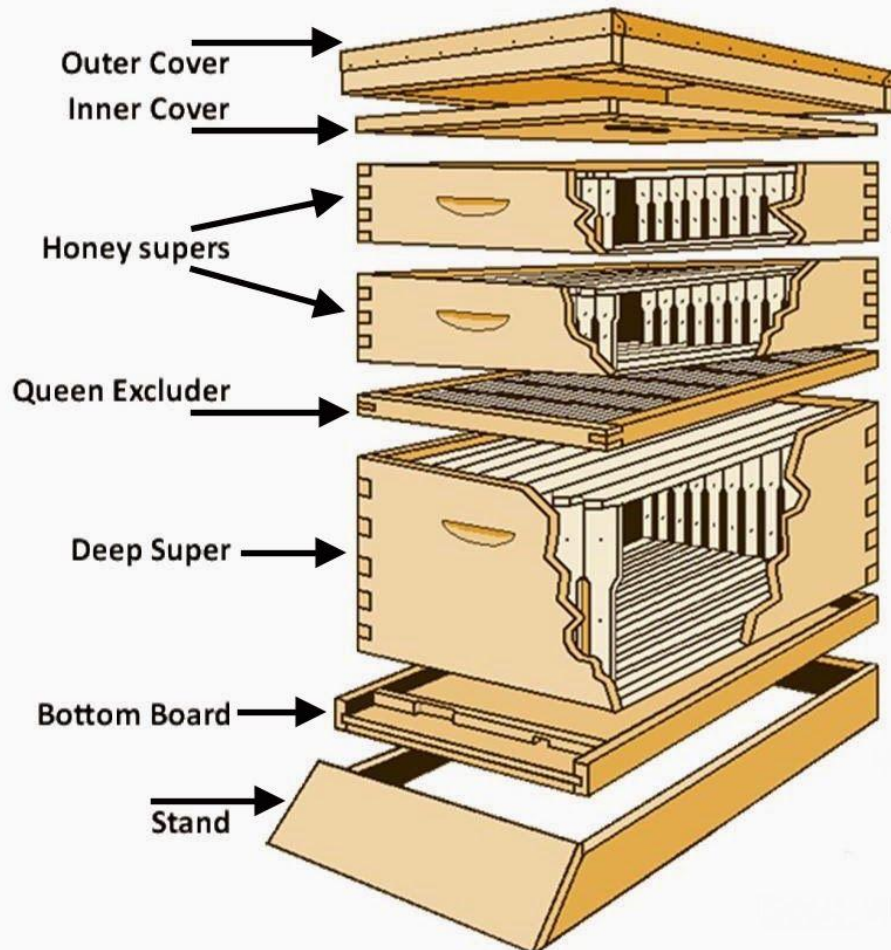


- a. Hundreds of drone
- b. One single queen bee
- c. Up to 60,000 worker bees

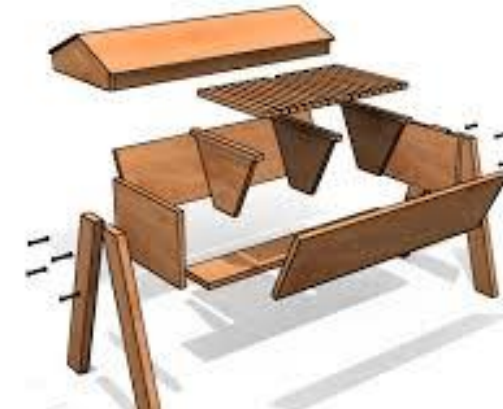
Life cycle of honeybees



Know about the basic beekeeping knowledge



© Two Men and a Little Farm

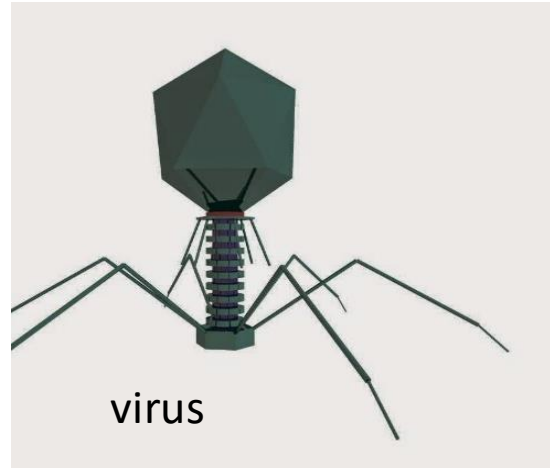


Challenges of beekeeping

✓ Pesticides



✓ Pathogens & pests

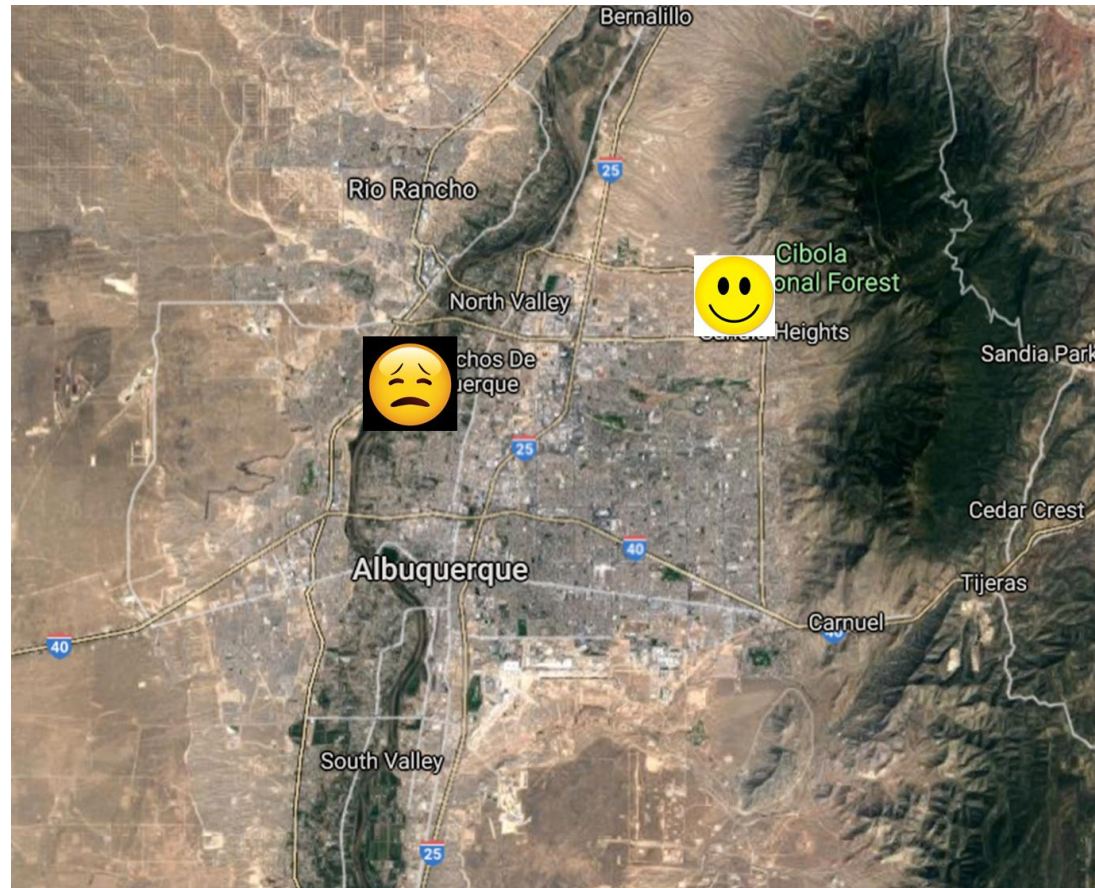


✓ Poor forage



To know about the floral resource and any pesticide applications around you

- A pound of honey is collected from a million of flowers.
- Honey bees fly up to 8 miles to collect nectar.



Manage your garden to support your bees

1. Grow flowers and provide clean water
2. Avoid pesticide application around your hive, flowers and crops



Spring- mainly trees and shrubs

Lilac



Chase tree



Summer

Purple prairie clover



Beebalm



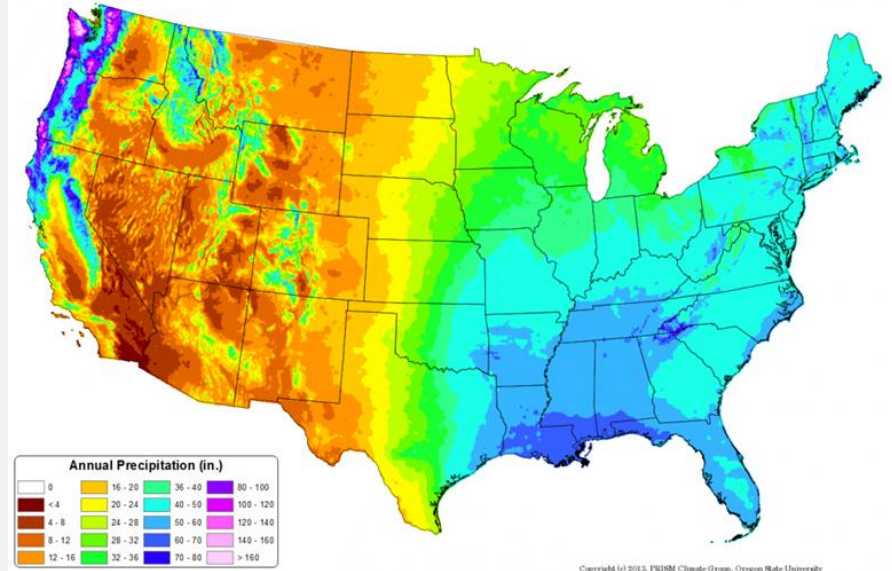
Sunflower



Sage



30-yr Normal Precipitation: Annual
Period: 1981-2010



Fall

Basic management

Spring

- 1. Start beekeeping**
- 2. Inspect hive once or twice a month**

- 1. Inspect hive once a month**
- 2. Mite treatment**
- 3. Feeding sugar**

Fall

Summer

- 1. Inspect hive once or twice a month**
- 2. Add honey super in early summer**
- 3. Harvest honey**

- 1. No inspection**
- 2. Enjoy seeing flying bee**

Winter

Consulting from beekeeping community

- ✓ New Mexico Beekeeping Association
- ✓ NM State University Extension Service about beekeeping
 - Ge Zhang: gezhang@nmsu.edu
 - Amanda Skidmore: skid@nmsu.edu
 - Miranda Kersten: mkersten@nmsu.edu

Thanks for your attention!

Ge Zhang: gezhang@nmsu.edu