

Today: "Taking Care of the Winter Landscape" with Marisa Thompson

Upcoming Webinars in this "Ready, Set, GROW!" Series

<https://desertblooms.nmsu.edu/ready-set-grow.html>

1st and 3rd Wednesdays of the month at 3 pm through March 2021!

- Dec 2 -- "Gardening Gift Ideas" - Join the Ready, Set, GROW crew as we share our favorite garden-related books, tools, and gear!
- Dec 16 -- "Hybrid Grapes, Hardwood Cuttings, and Holiday Wine Pairings for New Mexico" with Gill Giese
- Jan 6 -- "Health Benefits of Gardening" with Suzanne Cole
- Jan 20 -- "Houseplant Care" with John Garlisch
- Feb 3 -- "Starting Seeds Indoors" with Nissa Patterson
- Feb 17 -- "Winter Weed Management" with Leslie Beck
- Mar 3 -- "Designing Landscapes for Diversity" with Amanda Skidmore
- Mar 17 -- "How to Diagnose Diseases and Disorders?" with John Garlisch



BE BOLD. Shape the Future.

Ready, Set, **GROW!**

Webinar Gardening Series

Today:

“Taking Care of the Winter Landscape”

with Marisa Thompson

NMSU Urban Horticulture Extension Specialist

Nov. 18, 2020



BE BOLD. Shape the Future.

Ready, Set, GROW!

Webinar Gardening Series, Sept 2020 - March 2021

Hosts from NMSU Cooperative Extension



Suzanne Cole
Mora County



John Garlich
Bernalillo County



Lynda Garvin
Valencia County



Sara Moran Duran
Bernalillo County



Amanda Skidmore
Integrated Pest
Management Specialist



Marisa Thompson
Urban Horticulture
Specialist



BE BOLD. Shape the Future.

Vegetable Bed Maintenance Tip: MULCH!

Photos by Nissa Patterson
NMSU Bernalillo County Extension



Mulch with leaf litter,
woody mulch, pecan
shells, pine straw...



Veggie plants can be left
in place as a mulch!
*(diseased plants should
be removed)*



Mulch potted
plants too!

Control Winter Weeds

(*hint: MULCH!*)

- London Rocket Extension Guide
- <https://aces.nmsu.edu/ces/plantclinic/documents/london-rocket-w-11.pdf>



London Rocket

O & T Guide W-11

Frank Shoedice, Research Associate &
Mark Renz, Extension Weed Scientist



Cooperative Extension Service • College of Agriculture and Home Economics • October 2006

London Rocket, *Sisymbrium irio*, is a non-native winter annual mustard with bright or pale yellow flowers and slender, green to brown seed pods that ascend up the flowering stems. The plant exists as a rosette of leaves on the ground until it produces erect stems during flowering. London rocket is also known as desert mustard.



The stems are erect, branched at the base, and grow to about 20 in. tall. They are mostly green in color, but sometimes have a purple tinge, and often have hairs.



The lower leaves grow to about 6 in. long and have several pairs of opposite lobes separated by a pronounced midvein. The upper leaves are usually smaller, oblong or narrow in shape, with normally smooth edges, and one or more pairs of elongated lobes at the leaf base. All leaves are green with few to no hairs.



BE BOLD. Shape the Future.

Irrigating in Winter

- Best time of day to water in the winter?
 - Biggest concern is with damage to irrigation systems
 - Standing ice is also a hazard issue, and ice violations can be grounds for fines
- Water perennials on warmer days, allowing water to soak in deeply before moving to the next area.

Southwest Yard & Garden column links:

<https://nmsudesertblooms.blogspot.com/2019/11/same-depth-less-frequent-irrigating-in.html>



WATER BY THE SEASONS

SEASONAL WATERING RECOMMENDATIONS FOR THE GREATER ALBUQUERQUE AREA



Plant Type	How Often?				How Deep?
	WINTER (DEC TO FEB)	SPRING (MAR TO MAY)	SUMMER (JUN TO AUG)	AUTUMN (SEP TO NOV)	
TREES	1 TIME PER MONTH	1-2 TIMES PER MONTH	1 TIME PER WEEK	2-4 TIMES PER MONTH	24" INCHES
SHRUBS	1 TIME PER MONTH	2-3 TIMES PER MONTH	1 TIME PER WEEK	1 TIME PER WEEK	24" INCHES
FLOWERING PLANTS	1 TIME PER MONTH	1 TIME PER WEEK	2 TIMES PER WEEK	1 TIME PER WEEK	12" INCHES
DESERT ACCENTS	NONE	1 TIME PER MONTH	2 TIMES PER MONTH	1 TIME PER MONTH	24" INCHES
GROUNDCOVER	1 TIME PER MONTH	3 TIMES PER MONTH	1 TIME PER WEEK	2 TIMES PER MONTH	12" INCHES
GRASS: TURF (COOL SEASON)	2 TIMES PER MONTH	1-2 TIMES PER WEEK	3-5 TIMES PER WEEK	2 TIMES PER WEEK	4" INCHES
GRASS: TURF (WARM SEASON)	1 TIME PER MONTH	1-2 TIMES PER WEEK	2-3 TIMES PER WEEK	1 TIME PER WEEK	6" INCHES
GRASS: ORNAMENTAL	1 TIME PER MONTH	1 TIME PER WEEK	1-2 TIMES PER WEEK	2 TIMES PER MONTH	12" INCHES
VINES	1 TIME PER MONTH	1-2 TIMES PER MONTH	1 TIME PER WEEK	2 TIMES PER MONTH	18" INCHES

☼=MONTHLY 💧=WEEKLY

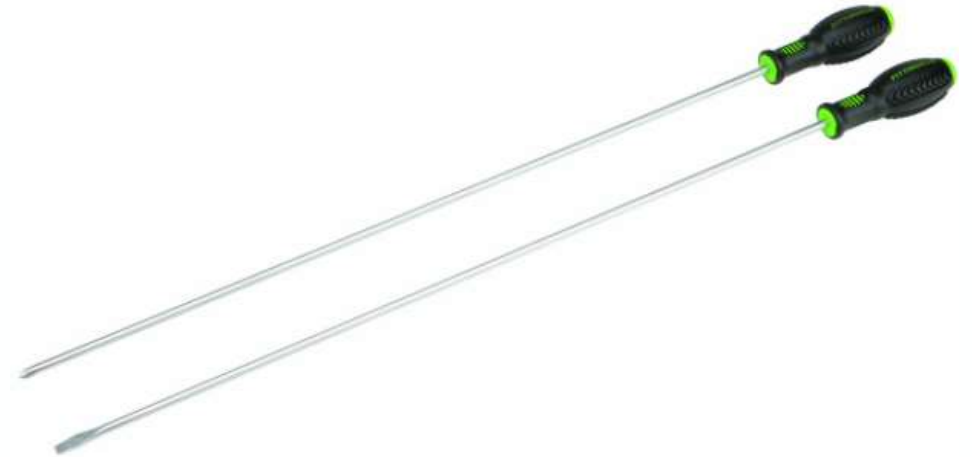
*Use these guidelines for established plants (1 year for shrubs and 3 years for trees).
 *Watering frequency depends on season, plant type, weather and soil texture. Water to beyond the outer edge of the plant's canopy and to the depth indicated.
 *If we receive more than a half inch of rain or more than 6" of snow, skip your next watering day or irrigation cycle. Avoid watering during freezing temperatures. Winter watering should happen during the warmest part of the day.
 *Depending on temperatures and rainfall, treat May and September like Summer months.
 *Refer to the [ABCWUA Xeriscaping Guide](#) for plant water use information.



Water Conservation/Water Rebates
 505-842-WATR #4



Plant Type	WINTER (DEC TO FEB)	How Deep?
 TREES	1 TIME PER MONTH	24" INCHES
 SHRUBS	1 TIME PER MONTH	24" INCHES
 FLOWERING PLANTS	1 TIME PER MONTH	12" INCHES
 DESERT ACCENTS	NONE	24" INCHES
 GROUNDCOVER	1 TIME PER MONTH	12" INCHES
 GRASS: TURF (COOL SEASON)	2 TIMES PER MONTH	4" INCHES
 GRASS: TURF (WARM SEASON)	1 TIME PER MONTH	6" INCHES
 GRASS: ORNAMENTAL	1 TIME PER MONTH	12" INCHES
 VINES	1 TIME PER MONTH	18" INCHES



Enough Snow?

- In most cases, a few inches of snow doesn't mean we can skip a winter irrigation event entirely.
- Two cups of snow scooped up from the front yard at the NMSU Agricultural Science Center at Los Lunas melted down to a little over 1/3 cup of water.
- ~6 inches of snow = 1 irrigation event

Southwest Yard & Garden column link:

<https://nmsudesertblooms.blogspot.com/2019/01/snowmelt-and-winter-irrigation-how-much.html>



Tree & Shrub Roots: Where are they?

- Absorptive, active roots are shallow AND extensive



- ➔ 90% in upper 3 ft. of soil
- ➔ 75% in upper 1 ft. of soil
- ➔ Extend laterally 2-4 times the plant height



BE BOLD. Shape the Future.

Southwest Yard & Garden column link:

<https://nmsudesertblooms.blogspot.com/2019/04/southwest-yard-and-garden-knowing-how.html>

Applied correctly, mulches offer the following benefits:

1. Inhibit weed germination and growth
2. Hold in soil moisture
3. Prevent water and wind erosion
4. Prevent surface soil crusting
5. Moderate soil temperature fluctuations
6. Protect plant roots from winter cold and helps prevent frost-heaving
7. Organic mulches can provide much-needed nutrients.
8. Organic mulches can feed the beneficial soil biota.
9. Organic mulches applied over a period of years can increase organic matter and improve the soil texture.
10. Organic mulches applied over a period of years can enhance the soil's ability to store plant nutrients.





Cheyenne Mock Orange



Lilac



Mahonia haematocarpa



Gooseberry

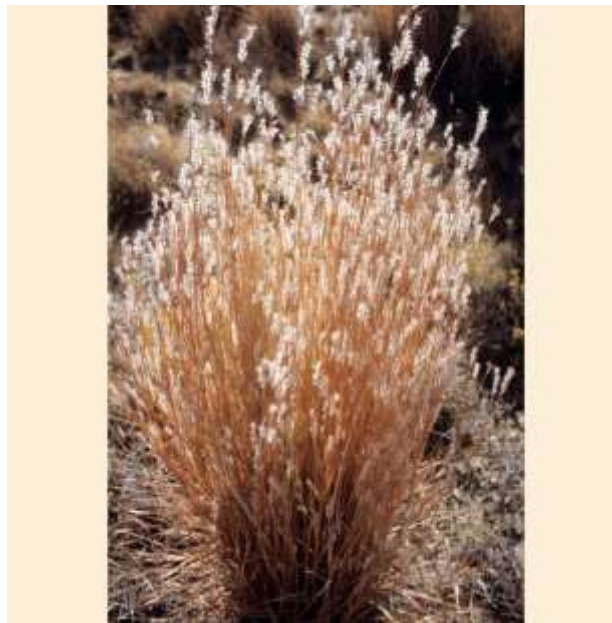
Photos courtesy of Bert Lutgens



BE BOLD. Shape the Future.



Purple fountain grass. Photo credit Les Bender.



Schizachyrium scoparium
Little Bluestem
Photo credit Plants of the Southwest

Hold off until early spring to cut back!



Southwest Yard & Garden column link:

<https://nmsudesertblooms.blogspot.com/2020/10/pain-in-grass-protecting-cold-sensitive.html>



BE BOLD. Shape the Future.

Avoiding Southwest Injury

- Southwest Yard & Garden Column link:

<https://nmsudesertblooms.blogspot.com/2020/01/protect-your-trunks.html>

Protect Your Trunks: Sunscald Kills



- January 22, 2020

Southwest Yard & Garden

(Follow-Up to Last Week's "Transplanting Plum Trees" Column)

by Dr. Marisa Thompson



Besides being girdled and slowly killed by hardware at the base, this ash tree in Palen looks normal on the



BE BOLD. Shape the Future.

'Spring Snow' Crabapple

Northeast side of trunk



Southwest side of trunk



Protect trunks of young trees during dormancy with...

- 50/50 mix of white latex paint and water (including lower branches!)
- Trunk wrap (loosely attached!)

<https://nmsudesertblooms.blogspot.com/2020/01/protect-your-trunks.>



*Include larger branches when protecting with white paint or a wrap!



***Remember to
support birds in
the winter with
food and water!***



Southwest Yard & Garden Column link:

<https://nmsudesertblooms.blogspot.com/2019/08/gardening-for-birds.html>



BE BOLD. Shape the Future.

Ready, Set, GROW!

Webinar Gardening Series, Sept – March

Upcoming!

December 2nd at 3:00 pm

“Gardening Gift Ideas”

with the entire Ready, Set, GROW! Crew!

- **December 16** “Hybrid Grapes, Hardwood Cuttings, and Holiday Wine Pairings for New Mexico” with Viticulturist Gill Giese
- **January 6** "Houseplant Care" with John Garlich
- **January 20** "Health Benefits of Gardening" with Suzanne Cole
- ...and more!

Marisa Thompson

NMSU Extension Horticulture Specialist

<https://nmsudesertblooms.blogspot.com/>

Social Media

@NMDesertBlooms



Thank You Very Mulch!



BE BOLD. Shape the Future.